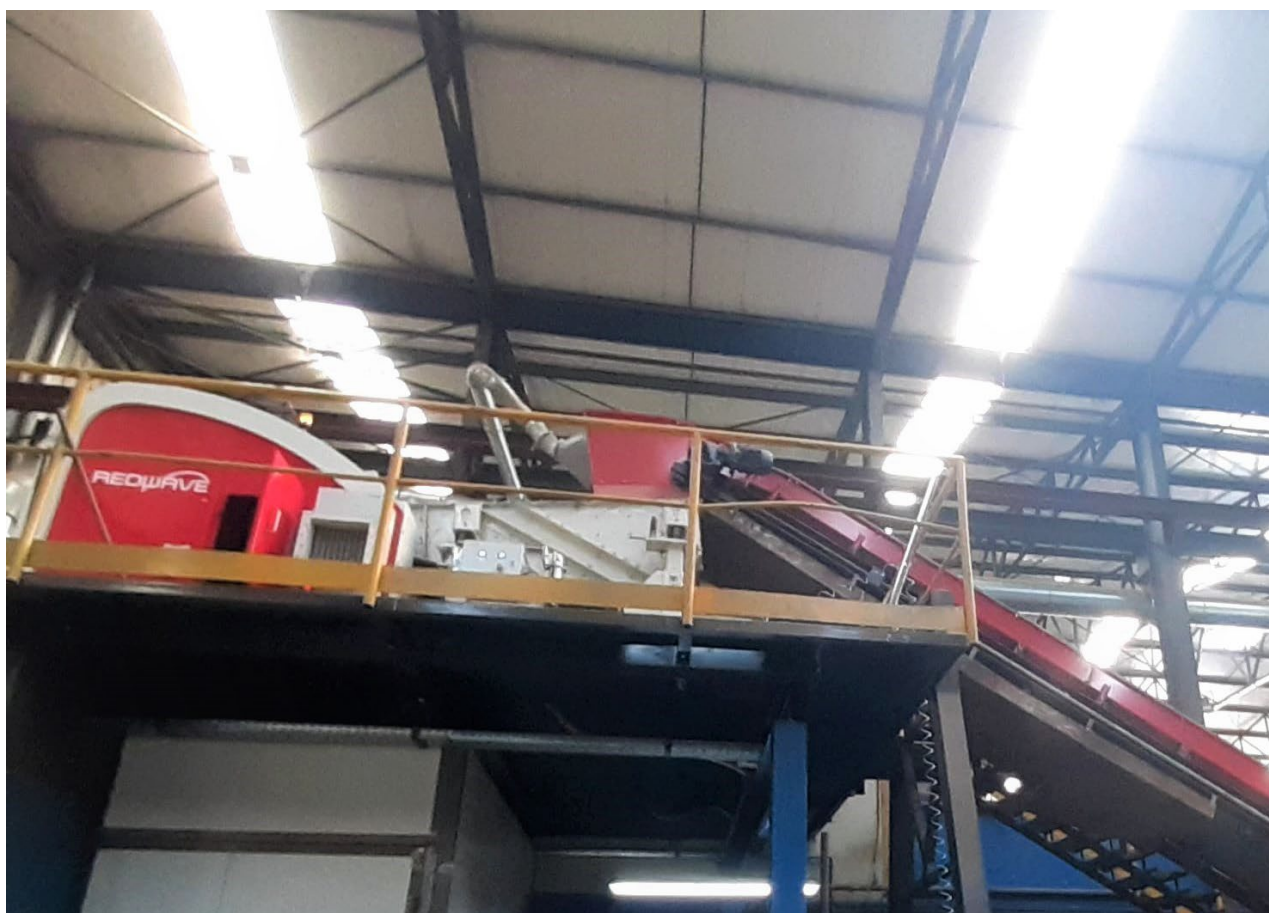


CASE STUDY

CFO & FILHOS SA
SORTING OF VARIOUS
NON-FERROUS METALS



REDWAVE





The performance of REDWAVE XRF/C technology is very satisfying, and it was absolutely the right decision to choose REDWAVE for our metal recycling plant. REDWAVE is a very experienced partner!

CFO has searched for solutions to separate metals for a few years. REDWAVE assured us the only complete solution for our process and that was the reason why we choose REDWAVE.

With the XRF technology it is possible to reach new way and to increase in Europe the value of scrap metals. It was a pleasure to work with REDWAVE's team, their knowledge and availability to our project was very important.

Liliana Ferreira Santos, Quality, environment at CFO & Filhos, SA

CUSTOMER

CFO S.A. opened for business in 1965 as a conventional trader of rags, scrap paper and scrap in Vila Nova de Gaia. Over the years they have increased their processing capabilities as well as their business portfolio. Today they are one of the main multifunctional platforms in Portugal for recycling of ferrous and non-ferrous metals, car fragmentation, decontamination of end of life vehicles and the purchase and sale of all grades of scrap.

SITUATION AND SOLUTION

Constantino Fernandes Oliviera & Filhos (CFO) approached REDWAVE with the urgent need of machines to sort their various kinds of non-ferrous metals into sellable products in order to strengthen their position in the market. At the on-site meeting, Mr. Antonio Pereira, General Manager of CFO showed REDWAVE jokingly their existing dense media system consisting of a conveyor belt and two hand pickers.

After successful trials at the REDWAVE test centre in Austria, CFO invested soon after in one REDWAVE 900 XRF-SDD/C easy upgrade to not only replace their existing "dense media" sorting ZORBA into TWITCH and ZEBRA (heavy metals) but also to further sort the produced ZEBRA. Furthermore, CFO sorts ZURIK and other non-ferrous metal streams generated at their yard or purchased on the open market.

CFO was very impressed with the capability and versatility of the XRF-technology, as only one machine was needed to fulfil all their needs rather than to purchase multiple other technologies, which was originally anticipated. Furthermore, the easy upgrade version makes it easily possible to increase capacity with only a few days of down-time and without any additional equipment.

HIGHLIGHTS

- One machine is all you need: Sort individual metals using the same machine. By using the REDWAVE XRF/C to sort specific metals with each pass, turn your ZORBA, TWITCH and ZEBRA into higher, money-making products
- Easy upgrade version: The machine comes already the largest housing, which makes it possible to easily increase needed capacity in a later stage reducing downtime to a few days only
- One machine is all you need: No need to invest in multiple machines requiring additional space and equipment



CASE STUDY

CFO & FILHOS SA - SORTING OF VARIOUS NON-FERROUS METALS

REDWAVE®



TECHNICAL DATA

TYPE OF MACHINE	REDWAVE 900 XRF-SDD/C 2W easy upgrade
INPUT MATERIAL	Various non-ferrous metals from ZORBA; Sorting of ZORBA in aluminium (TWITCH) and heavy metals (ZEBRA) Sorting of ZEBRA in high purity products of copper, brass, zinc, stainless steel, aluminium, etc.
CAPACITY	Depending on sorting step 1,5-6 t/h, for one sorting machine
SENSOR SYSTEM	Combination of X-Ray Fluorescence (XRF) and Camera (C)
GRAIN SIZE	8-30mm, 30-70mm, 70-120mm
WORKING WIDTH	900 mm / 36"

